

# Attachments for mini and compact excavators

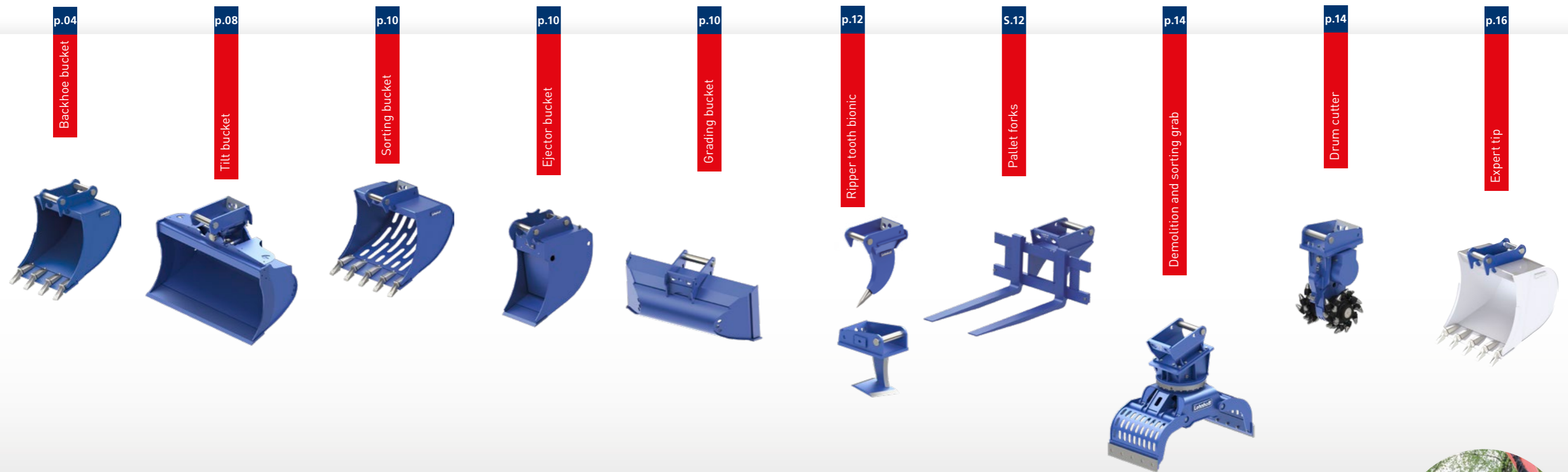


 1 - 12 t



# Attachments for excavators from 1 to 12 t

Superior quality and reliability: attachments from Lehnhoff was developed for the toughest applications. Our benchmark are the users and their requirements for efficiency and functionality. Therefore, in the development department, material procurement, production and final inspection, we leave nothing to chance. Only that which has proven to be effective here will also be effective on the construction site.



## Full programme for all applications

Lehnhoff high carbon steel equipment for mini excavators offer the best conditions for economical use of your excavators as multi-functional equipment carriers. The extensive product range provides efficient attachments for excavation works, recycling, demolition and handling with proven Lehnhoff quality.

Attachments from Lehnhoff impresses with the highest quality materials and manufacturing. Matched steels, drop forgings, casting components, robust welding components, cutting and high-strength wear-resistant plates are the basis for long service lives and thus the highest level of efficiency.

In short: quality from Lehnhoff is worth it!



## Additional uses:

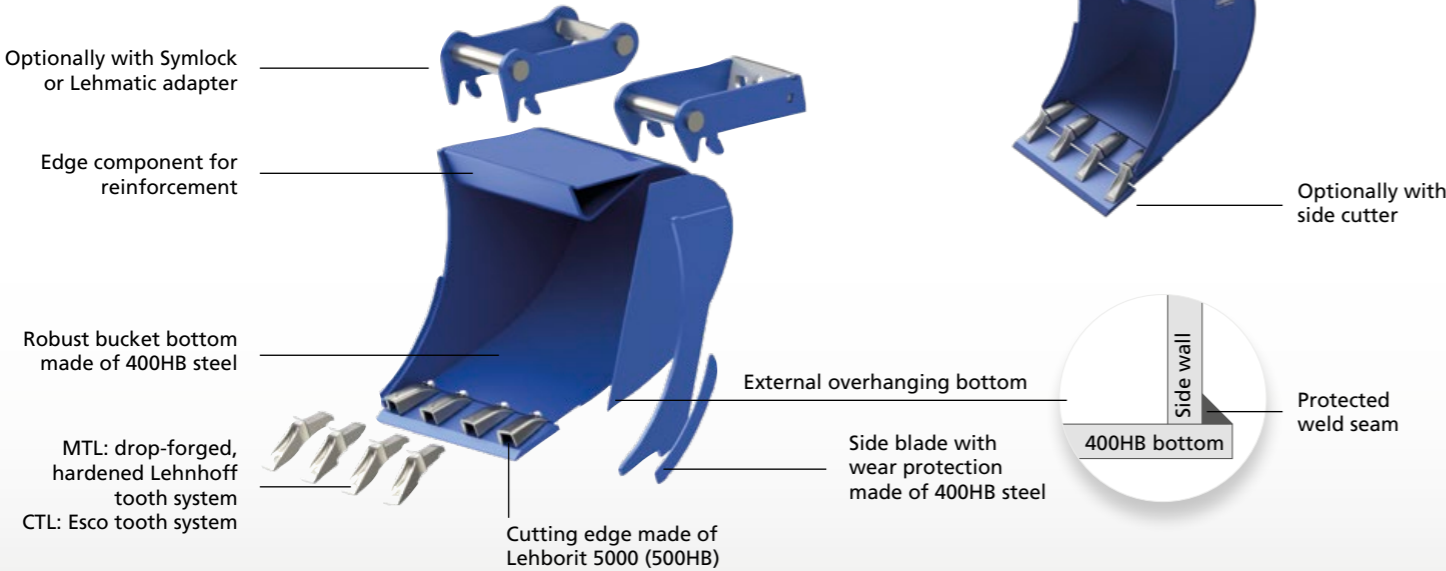
All buckets and ripper teeth with transport bracket



MTL/CTL mini/compact premium backhoe bucket

Just like the large buckets from Lehnhoff, the MTL and CTL backhoe buckets for mini and compact excavators meet the highest quality standards, and they are also designed for the toughest applications.

- Highest quality materials and unique weld quality for the highest efficiency and longevity
- Optimum filling and emptying properties ensure reduced fuel consumption



Premium backhoe bucket for mini excavators and compact excavators

Excavator	MTL 1		MTL 2		MTL 3		MTL 4		MTL 6	
	1 - 1.5 t		1.6 - 2.5 t		2.6 - 3.5 t		3.6 - 4.9 t		4.8 - 6 t	
Cutting width	SAE	KG	SAE	KG	SAE	KG	SAE	KG	SAE	KG
220 / 2 Z	23	29								
250 / 3 Z	26	31								
300 / 3 Z	30	37	40	46	56	68	66	71	80	76
400 / 3 Z	40	41	60	55	75	70	96	78	120	87
500 / 4 Z	50	49	80	61	100	87	130	90	140	97
600 / 4 Z	60	53	97	71	127	92	162	100	180	107
700 / 5 Z			120	75	153	106	195	110		
800 / 5 Z					180	120	230	124	250	128
1000 / 5 Z									320	148
Tooth system	404F		404F		400F		400F		400F	

Excavator	CTL 5		CTL 10		CTL 12	
	6 - 8 t		8 - 10 t		10 - 12 t	
Cutting width	SAE	KG	SAE	KG	SAE	KG
300 / 3 Z	90	122	105	130	130	140
400 / 3 Z	130	140	155	159	170	171
500 / 3-4 Z	170	156	200	180	225	175
600 / 4 Z	210	171	255	200	280	202
800 / 4-5 Z	300	211	360	225	395	250
900 / 5 Z	340	244	410	255	450	272
1000 / 5 Z	380	246	460	270	510	280
1100 / 5 Z					570	300
1200 / 6 Z					620	367
Tooth system	411F		U20S		U20S	

Cutting width (mm), Z = teeth, SAE = capacity (l), KG = weight (kg)



- Good filling properties and easy emptying thanks to LH double-conical design
- Bottom made of 400HB steel, overhanging with a protected welding seam
- Cutting edge made of Lehnborit 5000 (500HB)
- MTL: forged Lehnhoff tooth system CTL: Esco tooth system
- Optionally with Lehmatic or Symlock adapter
- Incl. bucket transport bracket
- Approx. 20 % less weight compared to the basic version
- Low fuel consumption = economical work



MTL S / CTL S with front cutting edge / without teeth

MTL S / CTL S premium buckets come without teeth, but with extended base and front cutting-edge. In combination with the double-conical design these are the ideal buckets for cable and canal works.

MTL S / CTL S with elonguated bucket base

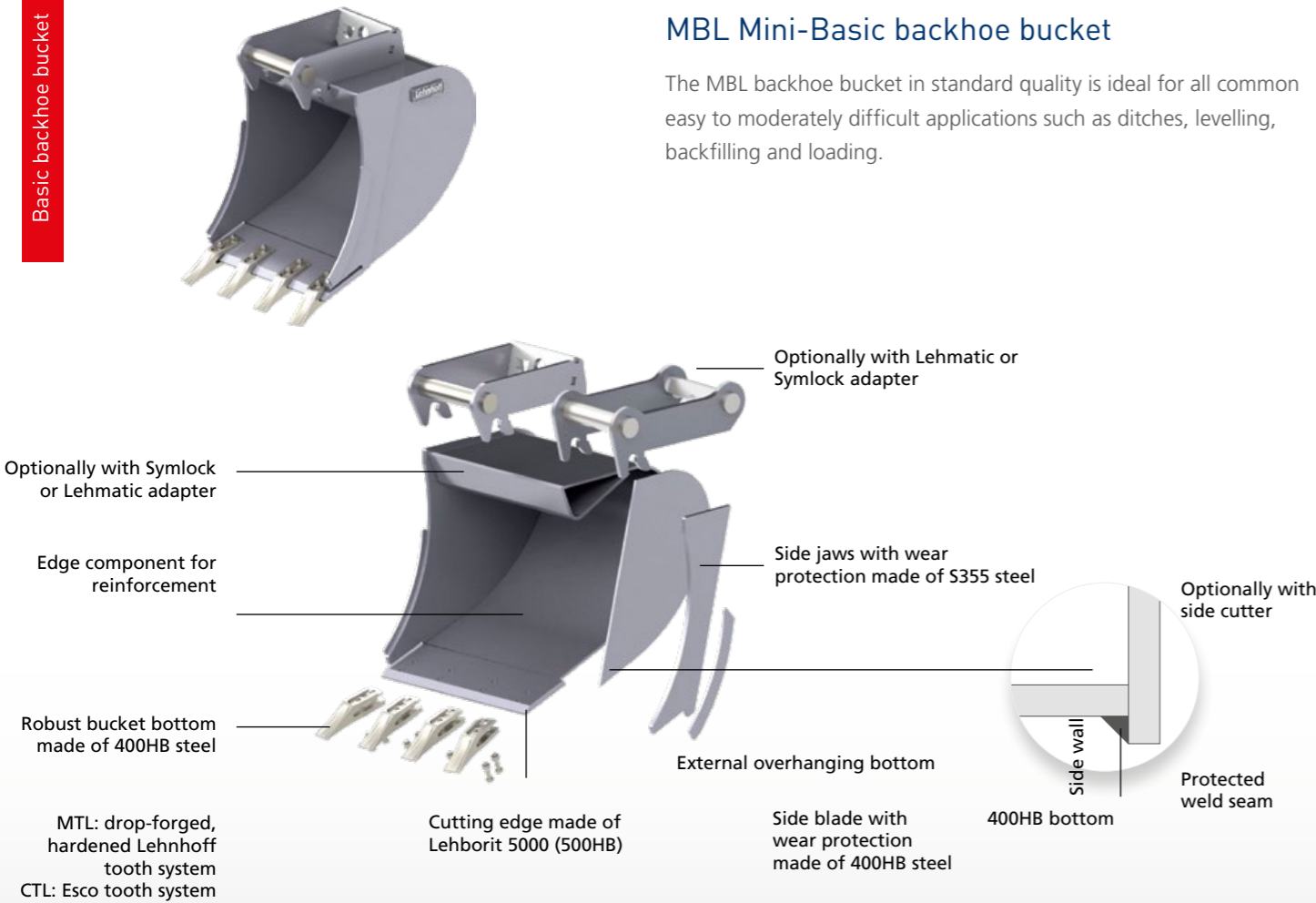
Excavator	MTL 1 S		MTL 2 S		MTL 3 S		MTL 4 S		MTL 6 S		CTL 5 S		CTL 10 S	
	1 - 1.5 t		1.6 - 2.5 t		2.6 - 3.5 t		3.6 - 4.9 t		5.0 - 6.0 t		6.1 - 8.0 t		8.1 - 10.0 t	
Cutting edge	SAE	KG	SAE	KG	SAE	KG	SAE	KG	SAE	KG	SAE	KG	SAE	KG
220	25	29												
250	29	31												
300	33	34	44	48	62	63	73	73	88	79	100	115		
400	44	40	66	56	83	72	106	84	132	91	130	135	175	150
500	55	46	88	63	110	81	143	95	154	102	185	150	220	165
600	66	51	107	70	140	91	178	105	198	113	230	165	280	185
700			132	77	168	100	215	116						
800					198	109	253	127	275	135	325	200	400	220
900											370	215	450	235
1000					198	109	253	127	275	135	415	230	510	245

Cutting width (mm), SAE = capacity (l), KG = weight (kg)

- Good filling properties and easy emptying thanks to LH double-conical design
- Bottom made of 400HB steel, overhanging with a protected welding seam
- Cutting edge made of Lehnborit 5000 (500HB)
- Approx. 10 % more capacity compared to MTL/CTL
- With Symlock adapter
- Incl. bucket transport bracket

MBL Mini-Basic backhoe bucket

The MBL backhoe bucket in standard quality is ideal for all common easy to moderately difficult applications such as ditches, levelling, backfilling and loading.



Mini-Basic backhoe bucket

	MBL 1		MBL 2		MBL 3		MBL 4		MBL 6	
Excavator	1 - 1,5 t		1,6 - 2,5 t		2,6 - 3,5 t		3,6 - 4,9 t		5 - 6 t	
cutting width [mm]	SAE	KG	SAE	KG	SAE	KG	SAE	KG	SAE	KG
250 / 2 Z	26	34								
300 / 3 Z	30	38	40	52	56	71	66	76	80	81
400 / 3 Z		44	60	61	75	82	96	88	120	93
500 / 3 Z	50	51	80	69	100	95	130	102	140	106
600 / 4 Z	60	57	97	79	127	105	162	113	180	118
700 / 4 Z			117	88	153	117	195	126	250	144
800 / 5 Z					180	129	230	138	320	169
900 / 5 Z					180	120	230	124	250	128
1000 / 5 Z									320	148

Cutting width (mm), Z = teeth, SAE = capacity (l), KG = weight (kg)

- Good filling properties and easy emptying thanks to LH double-conical design
- Bottom made of S355 steel, on the interior side
- Cutting edge made of 400HB steel
- Screwed fork teeth
- Optionally with Lehmatic or Symlock adapter
- Incl. bucket transport bracket



MBL S  
with front cutting edge / without teeth

The MBL S basic buckets come without teeth, but with an elongated bucket base and front cutting edge. Ideal solution for light to moderate cable and canal works.

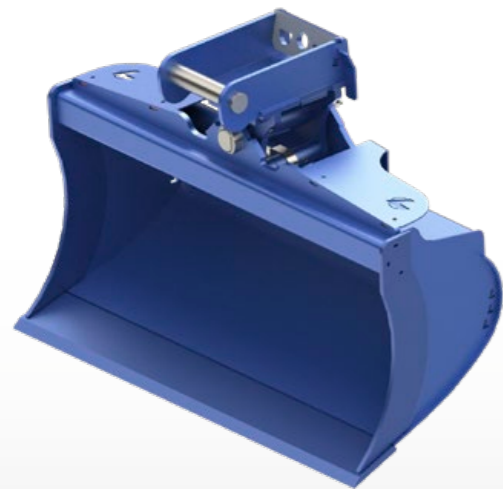


MBL S with front cutting edge for miniexcavators

	MBL S 1		MBL S 2		MBL S 3		MBL S 4		MBL S 6	
Excavator	1 - 1,5 t		1,6 - 2,5 t		2,6 - 3,5 t		3,6 - 4,9 t		5,0 - 6,0 t	
cutting width [mm]	SAE	KG	SAE	KG	SAE	KG	SAE	KG	SAE	KG
250	29	33								
300	33	36	44	50	62	71	60	80	88	84
400	44	43	66	57	83	82	100	90	132	97
500	55	49	88	65	110	94	130	104	154	110
600	66	55	107	72	140	106	160	114	198	123
700			132	80	168	118	200	131		
800					198	130	230	139	275	149
1000									352	175

cutting width (mm), SAE = capacity (Ltr.), KG = weight (kg)

- Good filling properties and easy emptying thanks to LH double-conical design
- Bottom made of S355 steel, on the interior side
- Cutting edge made of 400HB steel
- Approx. 10 % more capacity compared to MBL
- With Symlock adapter
- Incl. bucket transport bracket



### NEW: Pivoting ditch-cleaning bucket

The pivoting ditch-cleaning bucket from Lehnhoff for mini and compact excavators are ideally suited for digging ditches and excavating along walls and buildings.

- Large swing angle of 2 x 45°
- Round side panels for perfect digging properties.
- Lehboret 5000 (500HB) cutting and side cutting edge
- 1 Hydraulic cylinder, > 5t excavator with 2 hydraulic cylinders for optimal force distribution
- CG version also available with hydraulic grab rotating motor
- Also available in rigid design



### Universal tilt bucket

The universal tilt buckets from Lehnhoff for mini and compact excavators are ideal to excavate material and work on embankments and levelling work.

- Large swing angle of 2 x 45°
- Good filling properties and easy emptying thanks to the LH double-conical design (tilt bucket with backhoe bucket shape)
- Cutting edge and side jaws made of Lehboret 5000 (500HB)
- Smooth and stable bottom (400HB)
- Optionally with Lehmatic, Symlock or Variolock adapter
- Available with hydraulic cylinder, hydraulic grab rotating motor or in rigid design

### NEW: Ditch-cleaning bucket for miniexcavators

	MG 2 H		MG 4 H		MG 6 H	
Excavator	1 - 2.6 t		2.6 - 5.0 t		3.5 - 5.0 t	
Cutting width (mm)	SAE	KG	SAE	KG	SAE	KG
850	80	116				
1000	92	132	150	151		
1200	117	147	180	170	190	175
1400			208	180	240	185
1600			250	220	270	230

### Ditch-cleaning bucket for compact excavators

	CG 5 H		CG 5 M		CG 10 H		CG 10 M	
Excavator	6 - 8 t		6 - 8 t		8 - 10 t		8 - 10 t	
Cutting width (mm)	SAE	KG	SAE	KG	SAE	KG	SAE	KG
1500	280	358	280	380	350	339	350	400
1800	340	375	340	447	420	390	420	455

SAE = capacity (l), KG = weight (kg)



Symlock adapter turns ditch-cleaning buckets into side shift buckets, for example

### Universal tilt bucket

	MB 20 H		MB 20 M	
Excavator	3.5 - 6.0 t		3.5 - 6.0 t	
Cutting width (mm)	SAE	KG	SAE	KG
1000	200	175	200	255
1200	230	190	230	285

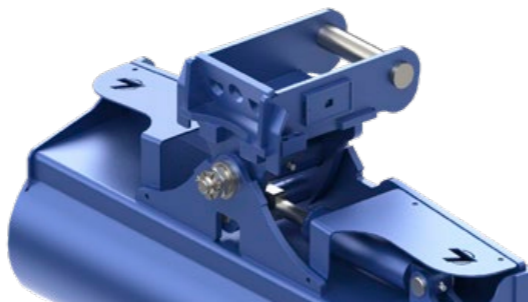
	CB 5 H		CB 5 M		CB 10 H		CB 10 M	
Excavator	6 - 8 t		6 - 8 t		8 - 10 t		8 - 10 t	
Cutting width (mm)	SAE	KG	SAE	KG	SAE	KG	SAE	KG
1200	420	397	350	500	560	500	560	510
1400	500	455	400	545	640	540	640	550

SAE = capacity (l), KG = weight (kg)

Lehnhoff tilt buckets are available either with one of the two available swivel drives or in a rigid version.

### Swivel design with hydraulic cylinder (H)

The robust and long-lasting swivel head for Lenhoff tilt bucket with hydraulic cylinder and piston-rod protection enables a swing angle of 2 x 45°.



swivel design with hydraulic cylinder on a ditch-cleaning bucket

### Swivel design with hydraulic grab rotating motor (M)

Extremely robust and low-maintenance drive for Lehnhoff tilt buckets, completely sealed and protected with 2 x 45° swing angle.



hydraulic rotating motor on a universal tilt bucket

### Rigid model

You can also get all ditch-cleaning buckets in a rigid design (for Powertilt).





Sorting bucket

For separation of all kinds of rough and fine materials. MSL model for mini excavators with plasma-cutting base, CSL model with bottom made of massive rectangular bars.

- Robust bucket design with versions for mini excavators (MSL) and compact excavators (CSL)
- CSL: bottom made of massive rectangular bars 30x2 0mm, bar spacing 60 mm
- MSL: plasma cutted base made of 400HB steel, hole spacing approx. 40 mm, optionally made of rectangular bars

Sorting bucket

	MSL 3		MSL 4		MSL 6		CSL 5		CSL 10		CSL 12	
Excavator	2.6 - 3.5 t		3.5 - 5.0 t		4.8 - 6.0 t		6 - 8 t		8 - 10 t		10 - 12 t	
Cutting width (mm)	SAE	KG	SAE	KG	SAE	KG	SAE	KG	SAE	KG	SAE	KG
600	127	90	162	100								
700	150	108										
800			230	120	250	125	300	260				
1000					320	143			460	295		
1200											620	355

SAE = capacity (l), KG = weight (kg)



Ejector bucket

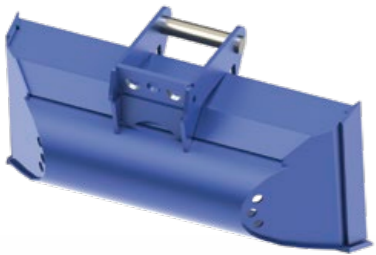
Complete with hydraulically powered ejector shutter without teeth. For soil material that is difficult to empty.

- MAL model for excavators from 1.6 - 5.0 t
- CAL model for excavators from 5.0 - 12.0 t
- Combinable with Lehmatic quickcoupler system

Ejector bucket

	MAL 2		MAL 4		CAL 5	
Excavator	1 - 3 t		3 - 6 t		6 - 10 t	
Cutting width (mm)	SAE	KG	SAE	KG	SAE	KG
300	42	62	56	89	80	145
400	56	74	83	102	125	166

SAE = capacity (l), KG = weight (kg)



Grading bucket  
ideal for use on rotators/tilt rotators

With an extensively contorted blade, double-conical side walls and optimal trapeze design, the Lehnhoff profile buckets are ideal for levelling and digging work.

- Tapered edges
- Long flat bottom and double-conical design
- Thus optimum penetration characteristics and fuel saving
- Efficient emptying

Grading bucket

	MP 20		CP 5		CP 10	
Excavator	3 - 6 t		6 - 10 t		8 - 10 t	
Cutting width (mm)	SAE	KG	SAE	KG	SAE	KG
1000	140	95	280	219		
1200					350	339
1300	200	117	410	275		
1500					420	390

SAE = capacity (l), KG = weight (kg)





Bionic ripper tooth

The bionically optimised ripping teeth from Lehnhoff stand for efficiency and stability when tearing and loosening rock, stone and soils. With welded tooth tip. And with Lehmatic adapter. Ideal for:

- Loosening of hard or frozen grounds
- Demolition work
- Loosening of stone and rock
- Breaking up road surfaces and concrete slabs
- Clearing work

Bionic ripper tooth

	RZ 10	RZ 30	RZ 60	RZ 80
Excavator	1 - 1.8 t	1.8 - 3.5 t	3.5 - 6 t	6 - 12 t
Suspension	SW 01	SW 03	SW 03	SW 08
Tooth radius (mm)	500	550	650	750
Weight (kg)	32	60	63	124



Trident rake

The Lehnhoff trident rake was developed for forest and landscaping management as well as for smaller root clearing. Clearing material such as branches, treetops and smaller rootstocks can be easily swept up. The trident rake can be mounted to all Mini and Midi excavators in no time, due to the Lehnhoff QC adapter. The bionic geometry (ripper tooth design) leads to ideal penetration into the soils with perfect force distribution.

- Bionic geometry
- Robust design
- Long lasting – due to perfect tuned use of materials (HB400 / HB500)
- Including Lehnhoff Lehmatic adapter

Trident rake

	DZ 30	DZ 60	DZ 80
Excavator	2.0 - 3.5 t	3.5 - 6 t	6 - 12 t
Suspension	SW 03	SW 03	SW 08
Tooth radius (mm)	550	655	750
Width [mm]	400	600	800
Weight [kg]	140	160	240



Rootcutter „beaver tooth“

The rootcutter „beaver tooth“ is the ideal working tool for excavators starting from 1-19t to get rid of rootstocks, tree stumps or side roots in no time. Designed to be a clearing cutting edge, which scrapes, cuts and peels every root stock and gives, after clearing, the possibility of replanting.

- Quick and residue-free clearing of root stocks etc.
- Easy scaping of tree stumps
- Quick assembly to the excavator due to the existing Lehnhoff QC adapter
- Duplex/symmetrical cutting edge (Hardox 400)
- Double-sided vertical, bionic cutting edge
- Long lasting – due to perfect tuned use of materials

Rootcutter beaver tooth

	BZ10	BZ30	BZ80
Excavator	0.5 - 2 t	1.5 - 6 t	6 - 12 t
SW size	SW01	SW03	SW08
Cutting radius	315 mm	411 mm	504 mm
Weight [kg]	24	37	82



## Symlock adapter quickly turns a shovel bucket into a backhoe bucket

For all applications for which more digging depth or range are required, i.e. for material loading, backfilling, excavation, obstructions, limited reach. Can be used both as backhoe bucket as well as shovel bucket thanks to simple 180° rotation. The original! With 5-year warranty.\*



i. e. backhoe bucket  
with Symlock adapter



i. e. ditch-cleaning bucket  
with Symlock adapter



Symlock adapter  
enables the use  
of shovel buckets ...

... as well as the use  
of backhoe buckets  
thanks to 180° rotation

\* 5-year warranty on clearance-free fit of the quickcoupler in the Symlock adapter.  
Only applies for the use of original Lehnhoff quickcoupler components.

[www.lehnhoff.de](http://www.lehnhoff.de)



Lehnhoff Hartstahl GmbH

Rungsstrasse 10-15 76534 Baden-Baden, Germany  
PO Box 11 01 65 . 76487 Baden-Baden, Germany

Tel. +49 (0) 72 23 / 966 - 0  
Fax +49 (0) 72 23 / 966 - 149  
[info@lehnhoff.de](mailto:info@lehnhoff.de)

Sales hotline: Tel. +49 (0)72 23 / 966 - 140