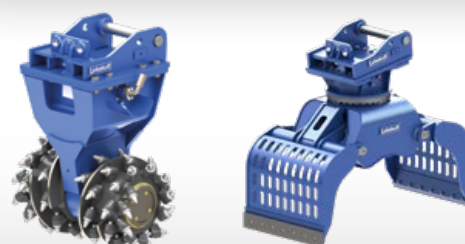
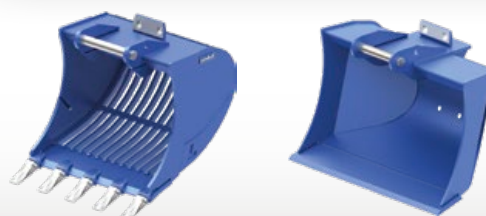


# Attachments for hydraulic excavators



 10 - 50 t



# Attachments for excavators from 10 to 50 t



Superior quality and reliability: attachments from Lehnhoff were developed for the toughest applications. Our benchmark are the users and their requirements for efficiency and functionality. Therefore, in the development department, material procurement, production and final inspection, we leave nothing to chance. Only that which has proven to be effective here will also be effective on the construction site.



## Uncompromising quality for the toughest applications

Lehnhoff high carbon steel equipment for excavators offer the best prerequisites for economical use of your excavators as multi-functional equipment carriers. The extensive product range provides efficient attachments for excavation works, recycling, demolition and handling with proven Lehnhoff quality.

Attachments from Lehnhoff impress with the highest quality materials and manufacturing. Matched steels, drop forgings, casting components, robust welding components, cutting and high-strength wear-resistant plates are the basis for long service lives and thus the highest level of efficiency.

In short: quality from Lehnhoff is worth it!



## High performance backhoe bucket HTL

Designed for tough applications. Made for a long service life and efficiency. Available in the GP design as all-purpose bucket and HD for especially tough demands.

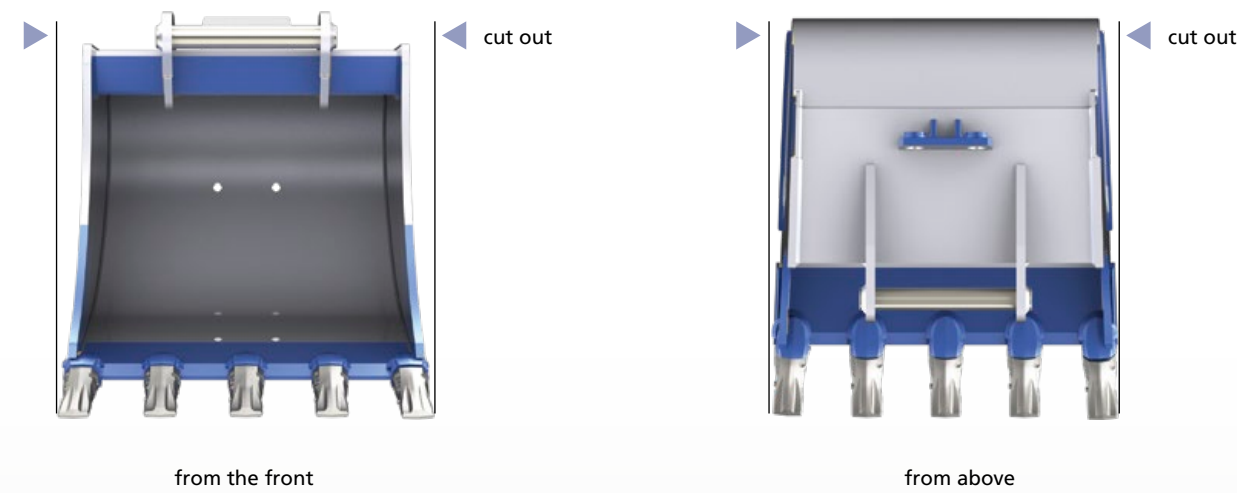
- Optimised for use on hydraulic excavators from 10 to 50 t
- Specially developed conical design for more productivity for reduced fuel consumption
- Low own weight
- Function-specific steel selection and dimensioning
- Robot-supported manufacturing processes ensure absolutely reproducible quality



## Advantages of the double conical design

The backhoe bucket concept of the HTL series is based on the perfect processing of the highest quality steels, a torsion-resistant welded construction, a long bucket base and a very special double-conical shape. This allows the HTL bucket to be filled better, offer lower digging resistance in all phases, and additionally also allows it to be emptied more easily. Because the shape of the excavator bucket has a decisive effect when digging and emptying.

## Double conical design



## One for all: Lehnhoff buckets for all common suspensions

Lehnhoff delivers all HTL backhoe buckets optionally with excavator-specific direct suspension, Lehmatic suspension or other quickcoupler suspensions. In all cases, the largest possible tear-out forces and optimised bucket kinematics are guaranteed for best possible filling and emptying.

Standard: Lehmatic suspension



Direct suspension



OQ suspension

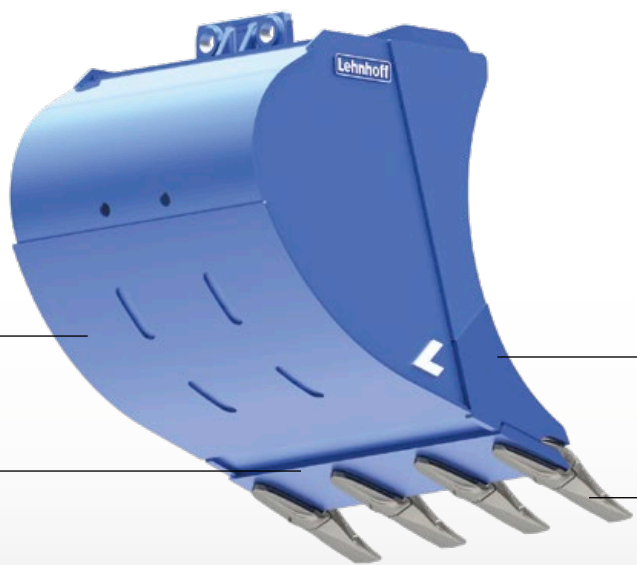



SWA suspension



CW suspension





Universal high performance backhoe bucket HTL GP

The Universal backhoe bucket HTL GP (General Purpose) was created for all-purpose use with all hydraulic excavators from 10 to 50 t. They are suitable for versatile excavating work and are light, economical and have a long service life. They also offer good levelling features for earthworks.

Additional sandwich base made of 400 HB steel

Cutting edge made of Lehboret 5000 (500 HB)

Side cutting edge made of 400 HB steel offers perfect wear protection

With ESCO fork holders and Ultralok tooth tip

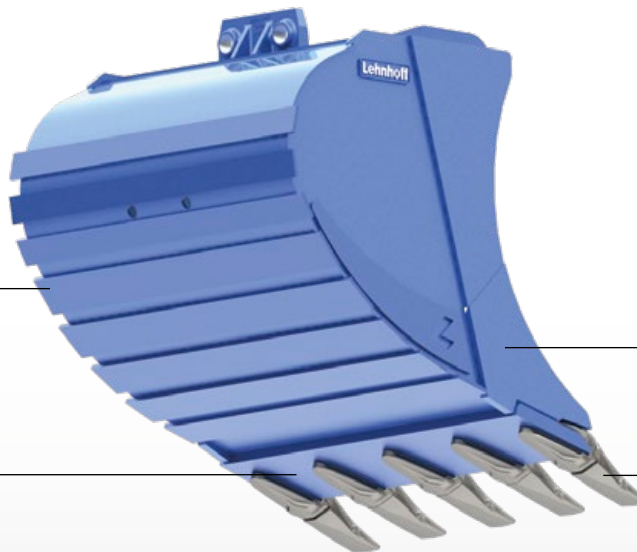

Universal high performance backhoe bucket HTL GP

Excavator	HTL 15 GP		HTL 20 GP		HTL 25 GP		HTL 30 GP		HTL 35 GP		HTL 40 GP	
	10 - 15 t		15 - 19 t		19 - 23 t		23 - 28 t		26 - 40 t		40 - 50 t	
Cutting width (mm)	SAE	KG	SAE	KG	SAE	KG	SAE	KG	SAE	KG	SAE	KG
400	0.18	315	0.22	340								
500	0.25	325	0.30	365								
600	0.33	387	0.38	380	0.43	558	0.48	620				
700	0.40	390	0.47	457	0.53	567						
800	0.48	472	0.56	520	0.63	669	0.70	700	0.85	790		
900	0.56	475	0.66	535	0.73	690						
1000	0.64	550	0.75	600	0.84	750	0.93	730	1.13	900	1.34	1200
1100	0.72	585	0.85	640	0.94	760						
1200	0.80	640	0.94	680	1.05	865	1.17	830	1.42	1235	1.69	1300
1300			1.04	743	1.16	870						
1400			1.13	770	1.26	968	1.41	1075			2.04	1550
1500					1.37	990	1.53	1150	1.87	1480	2.22	1620
1600							1.65	1206	2.02	1550	2.40	2210
1800									2.32	1430	2.76	2335
Tooth system	Ultralok U30S		Ultralok U30S		Ultralok U35S		Ultralok U35S		Ultralok U40S		Ultralok U55S	

SAE = capacity (l), KG = weight (kg)

- Good filling properties and easy emptying through double-conical design
- Sandwich base made from 400 HB steel, with protruding protected welding seam
- Cutting edge made of Lehboret 5000 (500 HB)
- Standard: ESCO tooth system Ultralok, other tooth systems on request
- With Lehmatic suspension as standard, optionally with other suspensions such as excavator-specific direct suspension, Oilquick (OQ), Verachttert (CW), Liebherr (SWA) etc.





Heavy duty high performance backhoe bucket HTL HD

The HTL HD (Heavy Duty) backhoe bucket for hydraulic excavators from 19 to 50 t are designed specially for the tough demands of demolition and rock. They survive the toughest applications with the highest break-out forces without any problems. The robust welded construction and the extra wear protection made from 400 and 500 HB steel ensure a long service life.

Optimum wear protection with base made from 400 HB steel plus protruding wear strips made from Lehboret 5000 (500 HB)

Cutting edge made from Lehboret 5000 (500 HB)

Side cutting edge and side wear protection made from 400 HB steel as standard

With ESCO fork holders and Ultralok tooth tip

Heavy duty high performance backhoe bucket HTL HD

Excavator	HTL 25 HD		HTL 30 HD		HTL 35 HD		HTL 40 HD	
	19 - 23 t		23 - 28 t		26 - 40 t		40 - 50 t	
Cutting width (mm)	SAE	KG	SAE	KG	SAE	KG	SAE	KG
600	0.43	520	0.48	690				
700	0.53	627						
800	0.63	750	0.70	810	0.85	870		
900	0.73	770						
1000	0.84	795	0.93	970	1.13	1050	1.34	1250
1100	0.94	840						
1200	1.05	900	1.17	1054	1.42	1280	1.69	1500
1300	1.16	957						
1400	1.26	980	1.41	1200	1.75	1530	2.04	1700
1500	1.37	1300	1.53	1273	1.87	1610	2.22	1850
1600			1.65	1333	2.02	1620	2.40	1950
1800					2.32	1920	2.76	2732
Tooth system	Ultralok U35S		Ultralok U40S		Ultralok U45S		Ultralok U60S	

SAE = capacity (l), KG = weight (kg)

- Good filling properties and easy emptying through double-conical design
- Base made of 400 HB steel, with protruding protected welded seam
- Wear protection from 400 and 500 HB steel
- Cutting edge made of Lehboret 5000 (500 HB)
- Standard: ESCO tooth system Ultralok, other tooth systems on request
- With Lehmatic suspension as standard, optionally with other suspensions such as excavator-specific direct suspension, Oilquick (OQ), Verachttert (CW), Liebherr (SWA) etc.







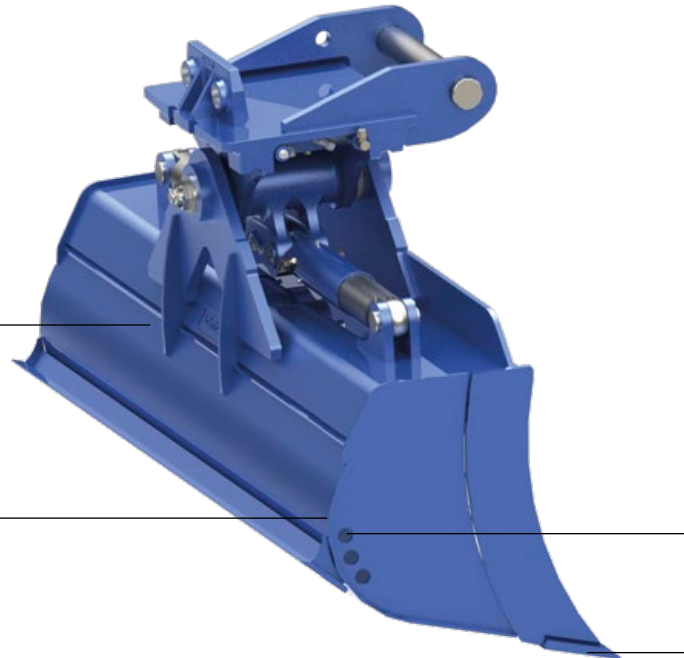
## Ditch-cleaning bucket

From levelling work and cleaning ditches through to creating embankments, Lehnhoff has the right ditch-cleaning bucket for very use in its product range. Choose the tilt bucket that is tailored to your needs from two different bucket shapes and swivel drives (hydraulic cylinder or swivel engine). Can also be delivered in fixed HG S design without swivel engine or hydraulic drive.

Base made of 400 HB steel

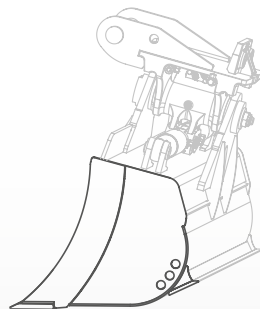
From size HG 30: as standard with wear strips (HB 500), laterally on base

Protection of the external welding seams thanks to protruding base

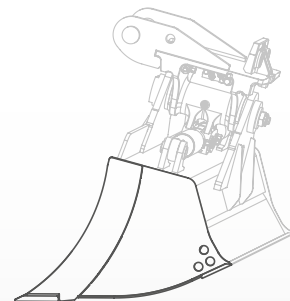


With drain holes on the side

Cutting edge made of Lehborit 5000 (500 HB)

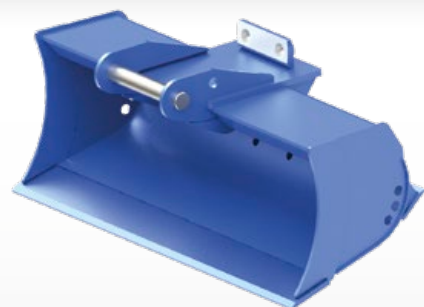


**HG S**  
Round, compact shape with rear cutting edge



**HG L**  
Long drawn-out base

## Two different bucket shapes



## Rigid ditch-cleaning bucket HG S

- Round, compact shape
- Also ideal for use with Powertilt quickcoupler
- With side water drain holes

## Two different swivel drives

### Swivel drive with hydraulic cylinders (H)

The robust and long-lasting swivel head for Lehnhoff tilt buckets with hydraulic cylinders and piston-rod protection enables a swing angle of 2 x 45°.



### Swivel design with hydraulic rotating motor (M)

Extremely robust and low-maintenance drive for Lehnhoff tilt buckets, completely sealed and protected, allows a 2 x 45° swing angle.



## Available for all current suspensions



Direct suspensions



Lehnhoff Lehmatic (MS and HS)



Lehnhoff Variolock (VL)



Oilquick (OQ)



Verachtert (CW)



Liebherr (SWA)

## Ditch-cleaning bucket HG S

	HG 15 S		HG 20 S		HG 25 S		HG 30 S		HG 35 S	
Excavator	10 - 15 t		15 - 19 t		19 - 23 t		23 - 28 t		28 - 40 t	
Cutting width (mm)	SAE	KG	SAE	KG	SAE	KG	SAE	KG	SAE	KG
1800	0.50	320	0.60	480						
2000	0.56	490	0.66	540	0.86	630	1.25	993		
2400							1.50	1080	1.70	1400

SAE = capacity (l), KG = weight (kg)







Ditch-cleaning bucket HG SH with hydraulic cylinder

- Ideal for excavation, material backfilling and ditch digging work
- Compact, round shape
- Tilt bucket with 2 x 45° tilt angle
- Two hydraulic cylinders with piston-rod protection and pressurisation valve
- Hoses up to swivel head
- Optional: backward RS blade (150x16 mm) for removal or levelling
- From HG size 30: wear strips (500 HB) as standard, laterally on base
- With drain holes on sides



Ditch-cleaning bucket HG SM with rotating motor

- Ideal for excavation, material backfilling and ditch digging work
- Compact, round shape
- Tilt bucket with 2 x 45° tilt angle
- With hydraulic grab rotating motor, secured with pressure limitation valve to 190 bar
- Hoses up to swivel head
- Optional: Rear cutting edge (500 HB) for removal or levelling
- From HG 30 size: wear strips (500 HB) as standard, laterally on base
- With drain holes on sides



Ditch-cleaning bucket HG LH with hydraulic cylinder

- Ideal for levelling and ditch digging work
- With long bucket base
- Tilt bucket with 2 x 45° tilt angle
- With integrated rear cutting edge and two stable internal bars
- Two hydraulic cylinders with piston-rod protection, with pressurisation valve
- Hoses up to swivel head
- From size HG 30: wear strips (500 HB) as standard, laterally on base
- With drain holes on sides



Ditch-cleaning bucket HG LM with grab rotating motor

- Ideal for levelling and ditch digging work
- With long bucket base
- Tilt bucket with 2 x 45° tilt angle and water drain holes
- With integrated backward blade and two stable internal bars
- With hydraulic grab-rotating motor, secured with pressure limitation valve to 190 bar
- Hoses up to swivel head
- From HG 30 size: wear strips (500 HB) as standard, laterally on base
- With drain holes on sides

Ditch-cleaning bucket HG SH

	HG 15 SH		HG 20 SH		HG 25 SH		HG 30 SH		HG 35 SH	
Excavator	10 - 15 t		15 - 19 t		19 - 23 t		23 - 28 t		26 - 40 t	
Cutting width (mm)	SAE	KG	SAE	KG	SAE	KG	SAE	KG	SAE	KG
1800	0.50	655	0.60	700						
2000	0.56	720	0.66	751	0.86	954	1.25	1370	1.40	1734
2400					1.04	1019	1.50	1540	1.70	1940
Swivel head	H11		H11		H22		H22		H3	

SAE = capacity (l), KG = weight (kg)

Ditch-cleaning bucket HG SM

	HG 15 SM		HG 20 SM		HG 25 SM		HG 30 SM		HG 35 SM	
Excavator	10 - 15 t		15 - 19 t		19 - 23 t		23 - 28 t		26 - 40 t	
Cutting width (mm)	SAE	KG	SAE	KG	SAE	KG	SAE	KG	SAE	KG
1800	0.50	730	0.60	790						
2000	0.53	740	0.66	850	0.86	913	1.25	1571	1.40	1998
2400					1.04	970	1.50	1695	1.70	2312
Grab rotating motor	Type 240		Type 250		Type 250		Type 260		Type 300	

SAE = capacity (l), KG = weight (kg)

Ditch-cleaning bucket HG LH

	HG 15 LH		HG 20 LH		HG 25 LH		HG 30 LH		HG 35 LH	
Excavator	10 - 15 t		15 - 19 t		19 - 23 t		23 - 28 t		26 - 40 t	
Cutting width (mm)	SAE	KG	SAE		SAE	KG	SAE	KG	SAE	KG
1800	0.50	680	0.60	735						
2000	0.55	745	0.66	784	0.86	973	1.13	1310	1.37	1830
2400					1.04	1050	1.38	1535	1.68	1860
Swivel head	H11		H11		H22		H22		H3	

SAE = capacity (l), KG = weight (kg)

Ditch-cleaning bucket HG LM

	HG 15 LM		HG 20 LM		HG 25 LM		HG 30 LM		HG 35 LM	
Excavator	10 - 15 t		15 - 19 t		19 - 23 t		23 - 28 t		26 - 40 t	
Cutting width (mm)	SAE	KG	SAE	KG	SAE	KG	SAE	KG	SAE	KG
1800	0.50	705	0.60	800						
2000	0.55	740	0.66	940	0.86	980	1.13	1450	1.37	2000
2400					1.04	1024	1.38	1550	1.68	2200
Grab rotating motor	Type 240		Type 250		Type 250		Type 260		Type 300	

SAE = capacity (l), KG = weight (kg)



## Hydro universal bucket

Stable and robust, for long service life, even for tough applications: the all-rounder for embankments and ditch digging work. The new Lehnhoff hydro universal bucket is available in two different shape and drive variants. The HB R with its bucket-shaped curved side wall is ideal for ditch-digging work. The HB G with its straight side jaw is well suited for precise embankment work.

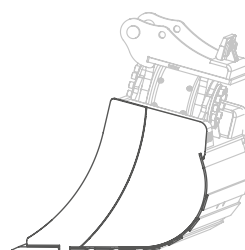


Optional:  
Wear strips as  
standard (HB 500)  
laterally on base,  
from size HB 25

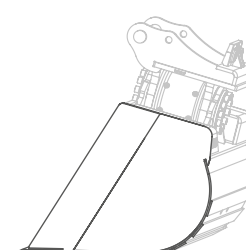


Base and side walls made of  
400 HB steel, blade 250x30 mm  
made from Lehbort 5000 (500 HB)

Protection of the external welding  
seams thanks to protruding base



**HB R**  
Bucket-shaped curved side walls



**HB G**  
Straight side walls

## Two different bucket shapes

## Two different swivel drives

### Swivel drive with hydraulic cylinders (H)

Robust, durable swivel head with two large hydraulic cylinders and piston rod guard, swivel angle 2 x 45°.



### Swivel design with hydraulic rotating motor (M)

Extremely robust and low-maintenance drive with 2 x 45° swivel angle, which significantly reduces the build height with its own embedded rotating motor. In this way, optimised tear-out and break-out forces are achieved.



## Available for all current suspensions



Direct suspensions



Lehnhoff Lehmatic (MS and HS)



Lehnhoff Variolock (VL)



Oilquick (OQ)



Verachttert (CW)



Liebherr (SWA)





### Hydro universal bucket HB RH with hydraulic cylinder

- Ideal for medium to heavy excavation and material backfilling
- Backhoe-shaped-design
- Hoses up to swivel head
- From HB 25 size: wear strips as standard (500 HB), laterally on base
- Two hydraulic cylinders with piston-rod protection, with pressure retention valve



### Hydro universal bucket HB GH with hydraulic cylinder

- Ideal for excavation and material infilling work
- Container shape with straight side cutting edge
- Hoses up to swivel head
- From HB 25 size: wear strips as standard (500 HB), laterally on base
- Two hydraulic cylinders with piston-rod protection, with pressure retention valve



### Hydro universal bucket HB RM with hydraulic rotating motor

- Ideal for medium to heavy excavation and material infilling in stable, robust bucket construction for long service life, even for tough use
- Backhoe-shaped design
- From size HB 25: wear strips (500 HB) as standard, laterally on base



### Hydro universal bucket HB GM with hydraulic grab rotating motor

- Ideal for excavation and material backfilling in stable, robust bucket design for long service life, even for tough use
- With straight side cutting edge
- From size HB 25: wear strips (500 HB) as standard, laterally on base

Hydro universal bucket HB RH

	HB 15 RH		HB 20 RH		HB 25 RH		HB 30 RH		HB 35 RH	
Excavator	10 - 15 t		15 - 19 t		19 - 23 t		23 - 28 t		26 - 40 t	
Cutting width (mm)	SAE	KG	SAE	KG	KG	KG	SAE	KG	SAE	KG
1400	0.68	680	0.80	725						
1500	0.73	697	0.87	735						
1600					1.20	1250	1.37	1349	1.65	1726
1800					1.37	1323	1.55	1431	1.85	1835
Swivel head	H11		H11		H22		H22		H3	

SAE = capacity (l), KG = weight (kg)

Hydro universal bucket HB GH

	HB 15 GH		HB 20 GH		HB 25 GH		HB 30 GH		HB 35 GH	
Excavator	10 - 15 t		15 - 19 t		19 - 23 t		23 - 28 t		26 - 40 t	
Cutting width (mm)	SAE	KG	SAE	KG	KG	KG	SAE	KG	SAE	KG
1400	0.68	670	0.80	725						
1500	0.73	690	0.87	750						
1600					1.20	1250	1.37	1320	1.65	1640
1800					1.37	1350	1.55	1440	1.85	1740
Swivel head	H11		H11		H22		H22		H3	

SAE = capacity (l), KG = weight (kg)

Hydro universal bucket HB RM

	HB 15 RM		HB 20 RM		HB 25 RM		HB 30 RM		HB 35 RM	
Excavator	10 - 15 t		15 - 19 t		19 - 23 t		23 - 28 t		26 - 40 t	
Cutting width (mm)	SAE	KG	SAE	KG	KG	KG	SAE	KG	SAE	KG
1400	0.68	650	0.80	858						
1500	0.73	720	0.87	880	1.13	1098	1.29	1455		
1600					1.20	1205	1.37	1550	1.65	2150
1800					1.37	1336	1.55	1750	1.85	2240
Grab rotating motor	Type 240		Type 250		Type 250		Type 260		Type 300	

SAE = capacity (l), KG = weight (kg)

Hydro universal bucket HB GM

	HB 15 GM		HB 20 GM		HB 25 GM		HB 30 GM		HB 35 GM	
Excavator	10 - 15 t		15 - 19 t		19 - 23 t		23 - 28 t		26 - 40 t	
Cutting width (mm)	SAE	KG	SAE	KG	KG	KG	SAE	KG	SAE	KG
1400	0.68	680	0.80	780						
1500	0.73	690	0.87	910	1.13	1050	1.29	1460		
1600					1.20	1240	1.37	1516	1.65	2080
1800					1.37	1290	1.55	1580	1.85	2240
Grab rotating motor	Type 240		Type 250		Type 250		Type 260		Type 300	

SAE = capacity (l), KG = weight (kg)







Sorting bucket

For separation of all kinds of rough and fine materials. Robust bucket design in high Lehnhoff quality.

- Base made from solid rectangular bars
- Cutting edge made of Lehnborit 5000 (500 HB steel), side wear sickles (400 HB)
- With fork holders and ESCO Ultralok tooth system
- Standard with Lehmatic suspension, optionally also with other suspensions such as excavator-specific direct suspension, Oilquick (OQ), Verachttert (CW), Liebherr (SWA) etc.

Sorting bucket

	HSL 15		HSL 20		HSL 25		HSL 30		HSL 35		HSL 40	
Excavator	10 - 15 t		15 - 19 t		19 - 23 t		23 - 28 t		26 - 40 t		40 - 50 t	
Cutting width (mm)	SAE	KG	SAE	KG	SAE	KG	SAE	KG	SAE	KG	SAE	KG
1200	0.80	646	0.94	710								
1300					1.16	955						
1400							1.41	1280				
1500							1.53	1400	1.87	1980		
1800											2.80	2600

SAE = capacity (l), KG = weight (kg)



Grading bucket, especially for use with rotators

With an extensively contorted cutting edge, double-conical side walls and optimal trapeze design, the Lehnhoff grading buckets are ideal for levelling and digging work.

- Side walls chamfered at 45°
- Cutting edge made from 500 HB steel
- Base with 400 HB steel
- Standard with Lehmatic suspension, optionally also with other suspensions, such as excavator-specific direct suspension, Oilquick (OQ), Verachttert (CW), Liebherr (SWA) etc.

Grading bucket

	HP 15		HP 20	
Excavator	10 - 15 t		15 - 19 t	
Cutting width (mm)	SAE	KG	SAE	KG
1400	0.62	437		
1600			0.82	533

SAE = capacity (l), KG = weight (kg)



Bionic ripper tooth

The bionically optimised ripping teeth from Lehnhoff stand for efficiency and stability when tearing and loosening rock, stone and soils. With welded-on tooth tip and Lehmatic adapter.

- Optimum penetration through improved design
- Increased resistance through optimum ripper teeth structure
- Demolition of road surfaces and concrete panels
- Also ideal for clearance work
- Standard with Lehmatic suspension, optionally also with other suspensions such as excavator-specific direct suspension, Oilquick (OQ), Verachttert (CW), Liebherr (SWA) etc.



Bionic ripper tooth

	RZ 180	RZ 280	RZ 380	RZ 500
Excavator	10 - 19 t	19 - 28 t	26 - 40 t	40 - 50 t
Tooth radius (mm)	950	1150	1250	1350
Weight (kg)	280	420	485	995

Bionics – what an anteater has in common with Lehnhoff ripper teeth

Bionics is a word combining "biology" and "technology" and expresses the idea that principles derived from natural prototypes can be used for technical applications. For this prototype, the middle claw of the large anteater was observed in the case of the ripper teeth, which it uses for tearing open termite mounds, among other things.



[www.lehnhoff.com](http://www.lehnhoff.com)



**Lehnhoff Hartstahl GmbH**

Rungsstrasse 10-15 76534 Baden-Baden, Germany  
PO Box 11 01 65. 76487 Baden-Baden, Germany

Tel. +49 (0) 72 23 / 966 - 0  
Fax +49 (0) 72 23 / 966 - 149  
[info@lehnhoff.de](mailto:info@lehnhoff.de)

Sales hotline: Tel. +49 (0)72 23 / 966 - 140